

FIELD TRIPS

SWMCCC SUMMER WEEKEND OF PHOTOGRAPHY AND DIGITAL IMAGING 2016

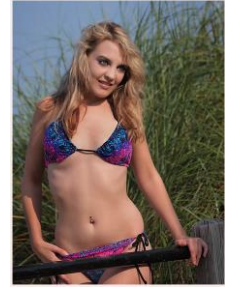
BEACH MODEL SHOOT

Fee **\$35.00**

Saturday 7:00 – 10:00 a.m.

This trip will provide the photographer with the opportunity to shoot our lovely models at one of our beautiful Lake Michigan beaches.

Leaders: John Hacht, Bill Barnard & John Klaehn



NATURE FIELD TRIP

Fee **\$30.00**

Friday 7:00 – 10:30 a.m.

Join us for an early morning hands-on workshop where there are an abundance of summer wild flowers and tiny creatures. This event is geared to the intermediate and advanced photographer. Bring a camera with close-up capability and tripod for photographing flowers and other small creatures.

Instructors: John Dykstra and Ed Post



BIRDS OF PREY PHOTO SHOOT

Fee **\$40.00**

Thursday 6:00 – 8:30 p.m.

We will travel by bus to a local preserve to photograph birds of prey including red-tailed hawk, great horned owl, peregrine falcon, etc. They are controlled by a handler and will be posed outside in natural settings in an open field. An opportunity to photograph large animals, such as deer and elk will also be available. Bring tripod and a long lens.

Instructors: John Dykstra and Ed Post



John is a professional photographer in West Michigan. He lectures on photography and is frequently called upon to judge photography competitions. His knowledge about professional photographic lighting focuses his attention on the quality and direction of light and he applies the same principles when photographing nature.

Ed is an award winning photographer who specializes in nature and landscape photography. His photography is frequently featured in state and local publications, and his work is displayed in galleries and exhibits. His background as an amateur naturalist is invaluable in the field.

Check their websites at:

www.johndykstraphotography.com and
www.edpostphotography.com

Note: You must be registered to participate in the Field Trips. Buses for all field trips will load at the corner of Columbia and 10th Streets, by Phelps Dining Hall. Buses will begin loading 15 minutes before the stated departure time. All bus trips are limited to 40 attendees. Bring camera, film/memory cards, an assortment of lenses and tripod.